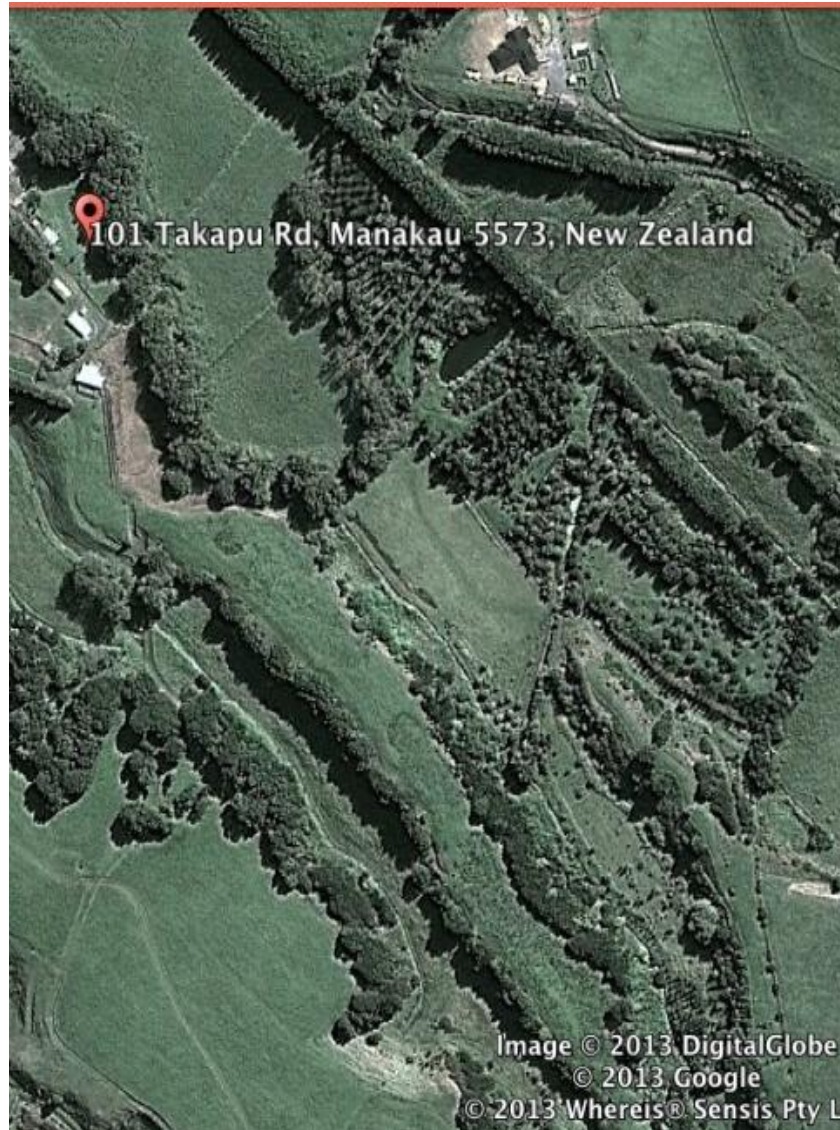


ASPENDALE ARBORETUM 2003 - 2014



Aspendale 2014



Aspendale - *Populus*

- Section Populus

- alba 1 clone
- tremuloides 1 clone
- x tomentosa 1 clone

Section Aigeiros

- deltoides 45 clones
- nigra 3 clones

Deltoides clones 2012



Aspendale - ***Populus***

Section Tacamahaca

cathayana	2 clones
ciliata	1 clone
maximowiczii	1 clone
simonii	2 clones
szechuanica	2 clones
trichocarpa	19 clones
yunnanensis	2 clones

Aspendale - *Populus*

• Hybrids

- angustifolia x nigra 'Italica' 1 clone
- angustifolia x yunnanensis 1 clone
- deltoides x alba 'Hickeliana' 1 clone
- deltoides x balsamifera 1 clone (Candicans Aurora)
- deltoides x ciliata 1 clone
- deltoides x nigra 'Italica' 12 clones
- deltoides x szechuanica 1 clone
- deltoides x yunnanensis 1 clone (Kawa)
- X canadensis x n. 'Italica' 1 clone (Crow's Nest)
- X canadensis x yunnanensis 1 clone (Toa)
- maximowiczii x nigra 1 clone
- nigra x maximowiczii 1 clone (Shinsei)

Important for trees in pasture – thick bark



Aspendale - *Salix*

Tree willows

- alba 31 clones
- babylonica 1 clone
- humboldtiana 2 clones
- lucida ssp.lasiandra 14 clones
- matsudana 5 clones
- mucronata 1 clone
- nigra 5 clones
- pentandra 3 clones
- alba x fragilis 1 clone
- alba x babylonica 1 clone
- babylonica x fragilis 1 clone

Weeping willows - planted 2004



Aspendale - *Salix*

- **Shrub willows** (sallows and osiers)

- aegyptiaca 1 clone
- arenaria 1 clone
- caprea 1 clone
- cinerea 2 clones
- daphnoides 4 clones
- disperma 1 clone
- eleagnos 1 clone
- fluviatilis 1 clone
- gracilistyla 1 clone
- hookeriana 1 clone
- lasiolepis 16 clones
- opaca 1 clone
- piperi 1 clone
- purpurea 13 clones
- schwerini 1 clone
- triandra 6 clones
- viminalis 4 clones
- X calodendron 1 clone
- X mollissima 1 clone

Aspendale 2014



What retired poplar breeders enjoy

